

marcal

www.marcal.fr

lukit

| design guillaume albot



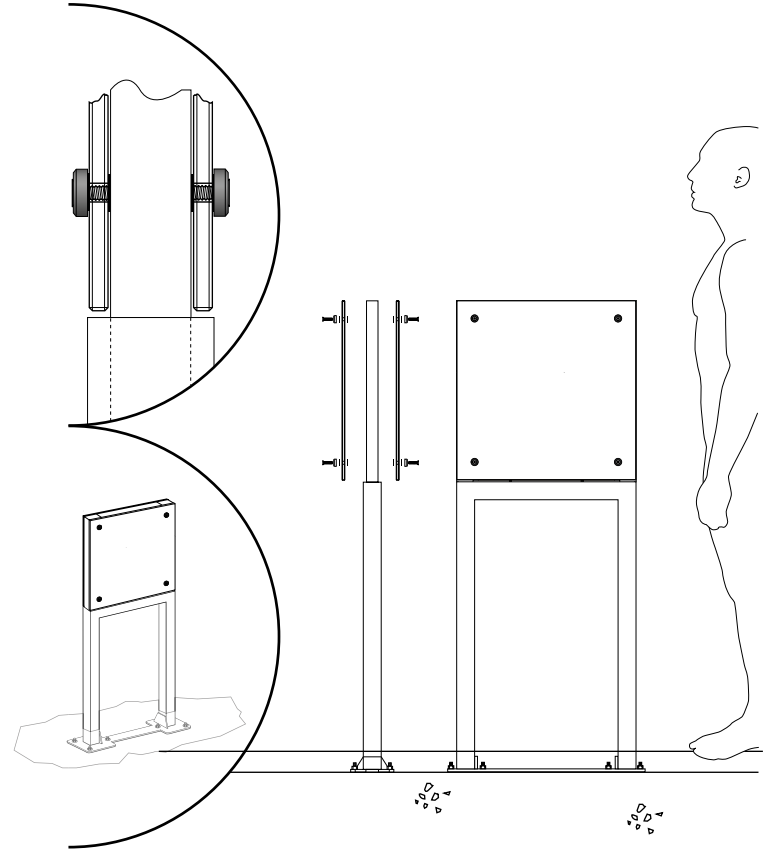


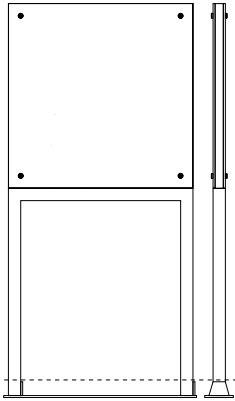
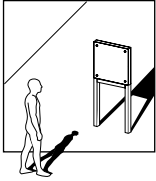
structure aluminium: thermolaquage RAL
aluminum structure: RAL powder coating

fixation verres kit aluminium microbillé: anodisé naturel et anodisé noir
glass fastening aluminum micro-sand blasted kit: natural and black anodized

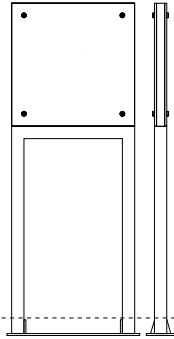


aluminium | アルミ | أومنيوم
verre trempé | tempered glass, vidrio templado, vetro temperato,
gehärtetem glas, 強化ガラス, زجاج صلب

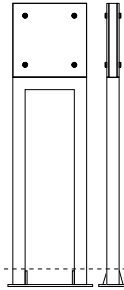




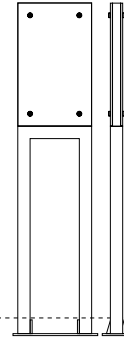
lukit 107
w 750 x h 1552 x d 50mm
(750 x 750mm)
w 29,53 x h 61,10 x d 1,97"
(29,53 x 29,53")



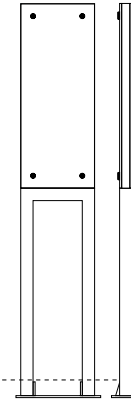
lukit 105
w 500 x h 1302 x d 50mm
(500 x 500mm)
w 19,69 x h 51,26 x d 1,97"
(19,69 x 19,69")



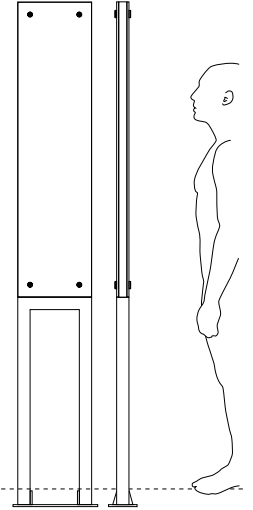
lukit 103
w 300 x h 1102 x d 50mm
(300 x 300mm)
w 11,81 x h 43,39 x d 1,97"
(11,81 x 11,81")



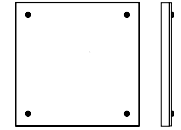
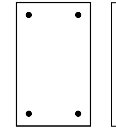
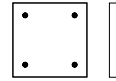
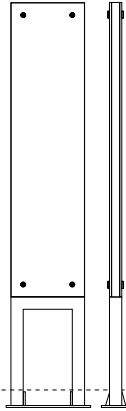
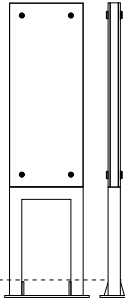
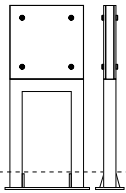
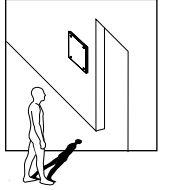
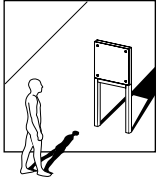
lukit 102
w 300 x h 1302 x d 50mm
(300 x 500mm)
w 11,81 x h 51,26 x d 1,97"
(11,81 x 19,69")



lukit 104
w 300 x h 1552 x d 50
(300 x 750mm)
w 11,81 x h 61,10 x d 1,97"
(11,81 x 29,53")



lukit 112
w 300 x h 2002 x d 50
(300 x 1200mm)
w 11,81 x h 78,82 x d 1,97
(11,81 x 47,24")



lukit 103 S
w 300 x h 702 x d 50mm
(300 x 300mm)
w 11,81 x h 27,64 x d 1,97"
(11,81 x 11,81")

lukit 104 S
w 300 x h 1152 x d 50mm
(300 x 750mm)
w 11,81 x h 45,35 x d 1,97"
(11,81 x 29,53")

lukit 112 S
w 300 x h 1602 x d 50mm
(300 x 1200mm)
w 11,81 x h 63,07 x d 1,97"
(11,81 x 47,24")

lukit 103 M
w 300 x h 300 x d 40mm
w 11,81 x h 11,81 x d 1,57"

lukit 102 M
w 300 x h 500 x d 40mm
w 11,81 x h 19,69 x d 1,57"

lukit 105 M
w 500 x h 500 x d 40mm
w 19,69 x h 19,69 x d 1,57"